

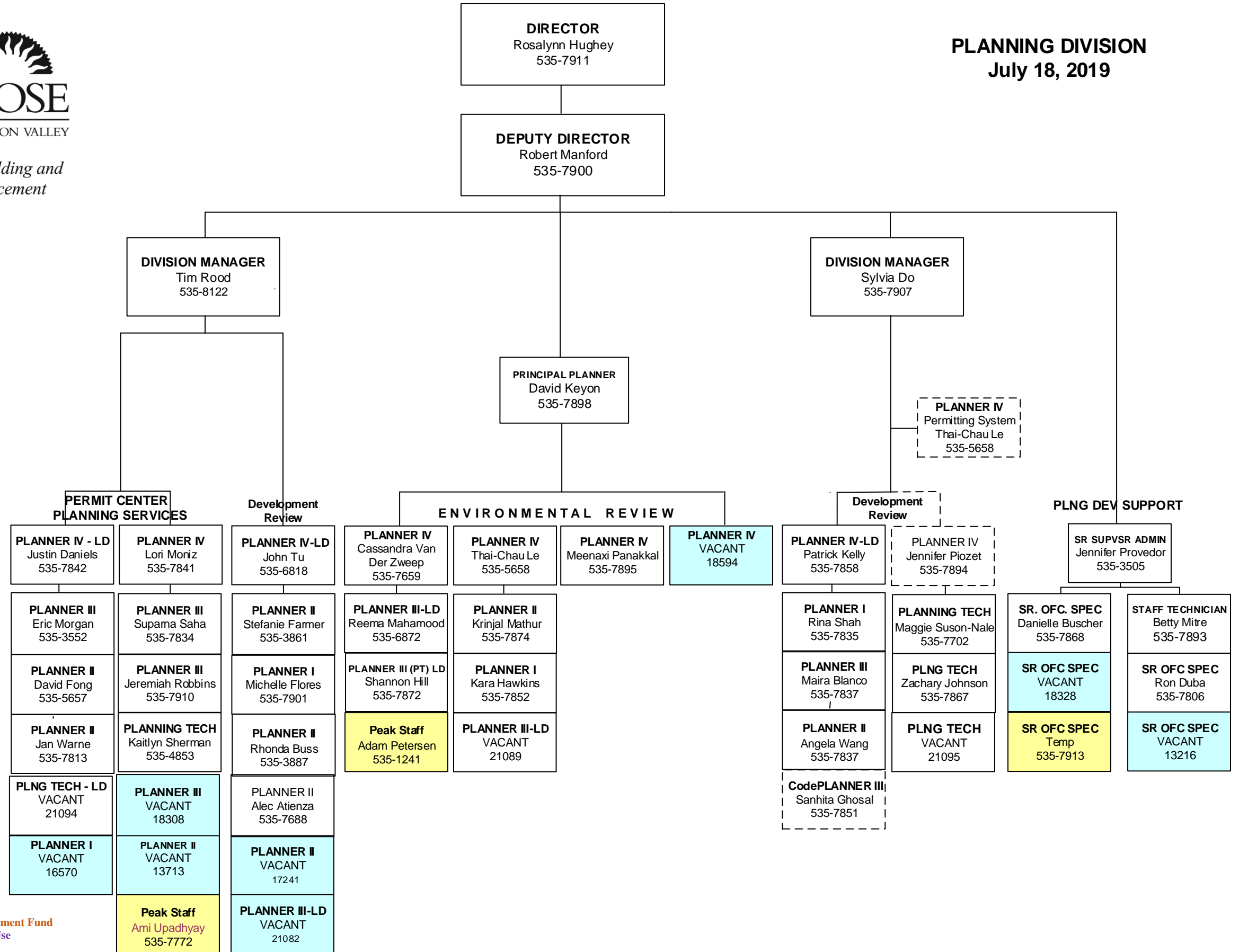
FUND DESCRIPTION

- 001 General Fund
- 346 Housing
- 423 Integrated Waste Management Fund
- 446 Storm Drainage Service Use
- 512 ESD
- 523 Airport Maintenance and Operations
- 541 Sewage Service And User Charge
- 465 Construction Excise Tax Fund
- 441 CDBG



Planning, Building and Code Enforcement

**PLANNING DIVISION**  
July 18, 2019



FUND DESCRIPTION

- 001 General Fund
- 346 Housing
- 423 Integrated Waste Management Fund
- 446 Storm Drainage Service Use
- 512 ESD
- 523 Airport Maintenance and Operations
- 541 Sewage Service And User Charge
- 465 Construction Excise Tax Fund
- 441 CDBG